

Can you show 'due diligence' with your metal detector?

MCI Myrias Metal Detector software can log time- and date-stamped data automatically from your production line Metal Detector to record every pack that has been rejected by the machine. **MCI Myrias** can also log or calculate summaries showing reject rates over periods and product runs of any length. Either way, you get a short, medium and long-term picture of product failing at the metal detector.

Just as important, **MCI Myrias** can record your routine calibration checks too, showing that you have periodically passed test pieces through the machine to verify correct set-up and operation.

When you need help to show 'due diligence' to BRC or other standards, **MCI Myrias** can provide full, detailed records of all your product runs and routine calibrations.

MCI Myrias Metal Detector software features:

- ◆ Interfaces to metal detectors through cable or wireless links using serial, LAN, WAN or Internet protocols
- ◆ Option of visual alarms at Supervisor's PC
- ◆ Signals when calibration checks are due
- ◆ Records differentiate between production rejects and test-piece calibration checks
- ◆ Links to multiple metal detectors without loss of system performance
- ◆ Can be run with Checkweigher module to show comprehensive pattern of rejects



MCI Myrias software has been proved in over 200 installations including food, drink, chemicals and engineering, helping to reduce production costs, assure quality and provide records for legal and regulatory requirements.

Optional additional **MCI Myrias** software modules include:

- Feedback to automatic filling machines for closed-loop weight control
- Fill head performance analysis for reducing fill variability
- Lot/Batch/other identifiers for full traceability

SCREEN DISPLAYS AND PRINTED REPORTS

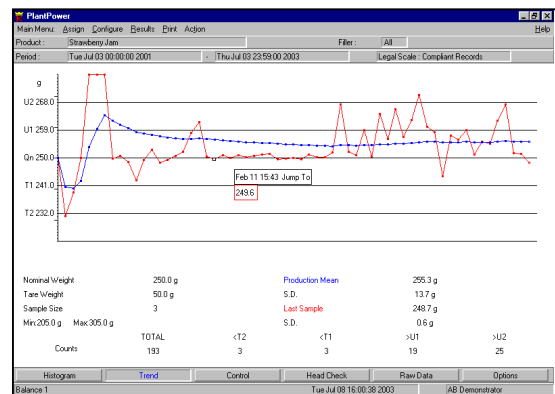
- ◆ Runs on **MCI Myrias** systems under easy-to-use standard software
- ◆ Metal detector rejects recorded fully automatically or keyed in by an Operator
- ◆ Displayed warnings for Supervisors and Managers on rejects and calibration failures



Tue Nov 23 23:05:45 2004												
Part	: 1											
Mean	: 753.6 ml											
Standard Deviation	: 9.7											
Number of Packs	: 20											
Minimum Value: 733.7 ml	Maximum Value: 766.4 ml											
Range: 32.7 ml												
# < T2:	0	# < T1:	1	# > U1:	2	# > U2:	0					
763.7	755.2	755.1	765.0	752.1	766.4	736.1	751.4	758.5				
733.7	752.6	747.8	756.4	759.1	741.4	764.6	741.9	763.5				
763.7	755.2	755.1	765.0	752.1	766.4	736.1	751.4	758.5				
733.7	752.6	747.8	756.4	759.1	741.4	764.6	741.9	763.5				
733.7	752.6	747.8	756.4	759.1	741.4	764.6	741.9	763.5				
763.7	755.2	755.1	765.0	752.1	766.4	736.1	751.4	758.5				
733.7	752.6	747.8	756.4	759.1	741.4	764.6	741.9	763.5				
733.7	752.6	747.8	756.4	759.1	741.4	764.6	741.9	763.5				
763.7	755.2	755.1	765.0	752.1	766.4	736.1	751.4	758.5				
733.7	752.6	747.8	756.4	759.1	741.4	764.6	741.9	763.5				

- ◆ Recording and reporting of data entry, warnings and acknowledgements
- ◆ Configurable Management reports between selected dates/times
- ◆ Reports filtered by Line, time, products etc

- ◆ Trends, histograms, 2D and 3D graphics, transactions, exceptions, all in colour
- ◆ All records stamped with date and time
- ◆ Bespoke reports as required



MCI Myrias is an integrated suite of software modules covering many aspects of data acquisition, reporting and control of factory processes from procurement through production to despatch. **MCI Myrias** has a record of reducing manufacturing costs in almost every field of application.

If you would like to find out more, see a demonstration or discuss your own requirement, please phone us on 01252 722 399, email us at sales@mcisystems.co.uk or visit our website www.mcisystems.co.uk for more information